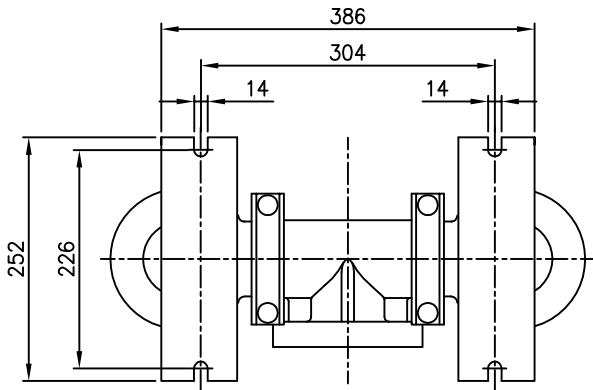


MODEL P8 PLASTIC PUMP POLYPROPYLENE

仕様 / Specifications

- 全高 / HEIGHT ----- 773 mm
- 全幅 / WIDTH ----- 491 mm
- 奥行き / DEPTH ----- 511 mm
- 重量 / SHIP WEIGHT ----- 28 kg.
- 圧縮空気入口 / AIR INLET ---- FNPT1/2"
- 排気口 / AIR EXHAUST ----- FNPT3/4"
- 吸込口 / SUCTION ----- ANSI150#2"
- 吐出口 / DISCHARGE ----- ANSI150#2"



A

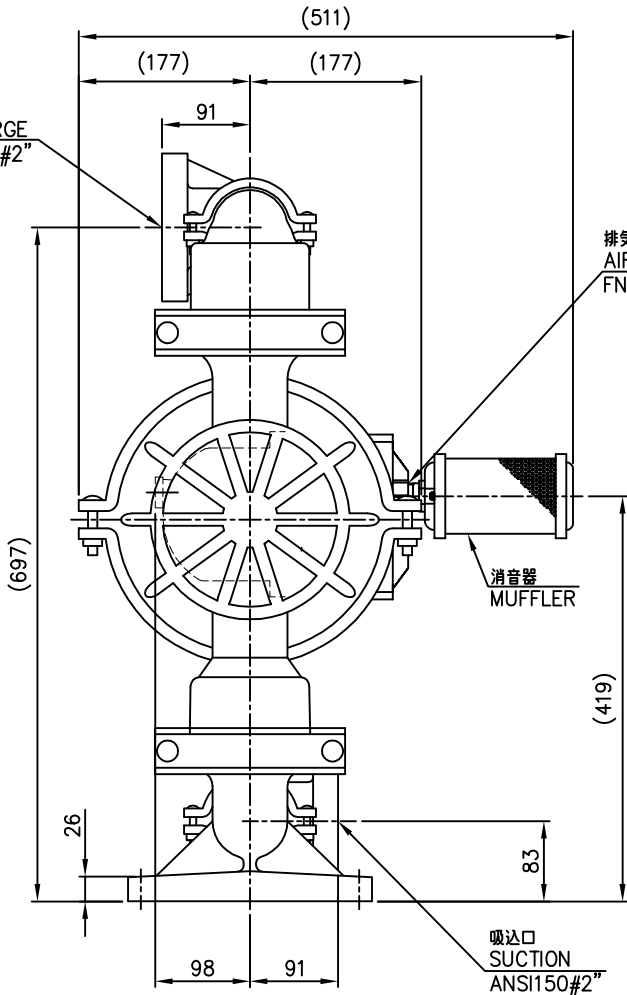
圧縮空気入口
AIR INLET
FNPT1/2"

切替弁排気口
PILOT EXHAUST

(423)

A

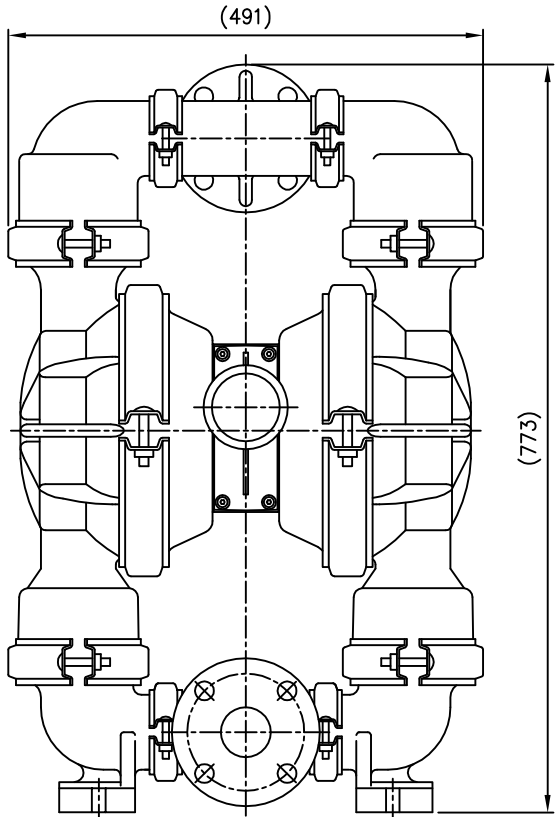
吐出口
DISCHARGE
ANSI150#2"



排気口
AIR EXHAUST
FNPT3/4"

消音器
MUFFLER

吸込口
SUCTION
ANSI150#2"



(491)

(773)

MATERIAL ---	DES. BY			TITLE エアー式ダブルダイヤフラムポンプ	
SCALE (A3) 1 : 6	DWG. BY D.Sugiyama 20/05/29	APP. BY	WILDEN AIR OPERATED DOUBLE DIAPHRAGM PUMP 型式 / MODEL: P8 POLYPROPYLENE		
UNITS	JAPAN MACHINERY COMPANY		DRAWING NO. P8型 (2") PP	REV. MARK 0	